

# RED INDICATES ORIGINAL

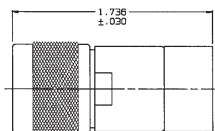
|             |  |     |       |   |     |          |        |
|-------------|--|-----|-------|---|-----|----------|--------|
| DWG<br>SIZE | DATA CONTAINED IN THIS DOCUMENT IS THE PROPERTY OF TROMPETER CONNECTIVITY, INC. AND SHALL NOT BE REPRODUCED, STORED, RETRIEVED, TRANSMITTED, OR IN ANY MANNER DISCLOSED TO THE PUBLIC WITHOUT THE EXPRESS WRITTEN PERMISSION OF TROMPETER CONNECTIVITY, INC. | REV | ECD   | DESCRIPTION                                     | DWN | APPROVED | DATE   |
| □           |  | H   | 12581 | ADDED: -15, -16 & -17;<br>SH 2 REDRAWN; SEE ECD | DKC | LHM      | 7/2/23 |

105-0376 SH 1C

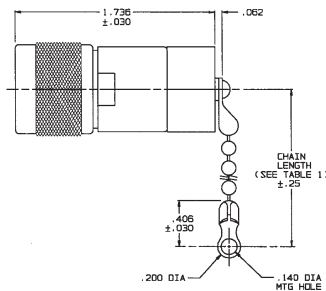
| DASH NO | DESCRIPTION               | DASH NO | DESCRIPTION                |
|---------|---------------------------|---------|----------------------------|
| -1      | TERM (NO CHAIN)           | -10     | TERM WITH 10.0 BRASS CHAIN |
| -2      | TERM WITH 2.5 BRASS CHAIN | -11     | TERM WITH 10.0 NYLON CHAIN |
| -3      | TERM WITH 2.5 NYLON CHAIN | -12     | TERM WITH 2.5 SST ROPE     |
| -4      | TERM WITH 3.0 BRASS CHAIN | -13     | TERM WITH 3.0 SST ROPE     |
| -5      | TERM WITH 3.0 NYLON CHAIN | -14     | TERM WITH 6.0 SST ROPE     |
| -6      | TERM WITH 6.0 BRASS CHAIN | -15     | TERM WITH 4.0 SST ROPE     |
| -7      | TERM WITH 6.0 NYLON CHAIN | -16     | TERM WITH 7.0 SST ROPE     |
| -8      | TERM WITH 4.0 BRASS CHAIN | -17     | TERM WITH 4.5 SST ROPE     |
| -9      | TERM WITH 4.0 NYLON CHAIN |         |                            |

| DASH NO | "A" DIA | "B" DIA | "C" DIM | "D" DIA |
|---------|---------|---------|---------|---------|
| -02     | .630    | .750    | 1.065   | .450    |
| -03     | .505    | .625    | .941    | .369    |
| -04     | .439    | .562    | .878    | .355    |
| -05     | .380    | .500    | .816    | .325    |
| -06     | .317    | .437    | .753    | .295    |
| -07     | .281    | .408    | .722    | .278    |
| -08     | .510    | .750    | 1.065   | .450    |
| -09     | .567    | .687    | 1.003   | .419    |
| -00B    | .330    | .450    | .796    | .300    |

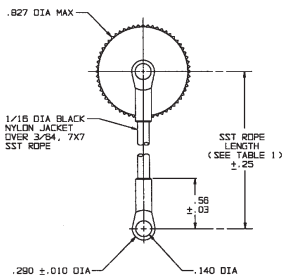
| INCH | MM   | INCH | MM    | INCH | MM    | INCH  | MM     |
|------|------|------|-------|------|-------|-------|--------|
| .005 | 0.13 | .290 | 7.37  | .418 | 10.64 | .625  | 15.88  |
| .010 | 0.25 | .295 | 7.49  | .437 | 11.10 | .630  | 16.00  |
| .030 | 0.76 | .300 | 7.62  | .436 | 11.15 | .687  | 17.45  |
| .032 | 0.81 | .317 | 8.05  | .450 | 11.43 | .722  | 18.34  |
| .062 | 1.57 | .325 | 8.26  | .500 | 12.70 | .750  | 19.05  |
| .140 | 3.55 | .330 | 8.38  | .505 | 12.83 | .753  | 19.13  |
| .200 | 5.08 | .355 | 9.02  | .56  | 14.22 | .786  | 19.46  |
| .25  | 6.35 | .380 | 9.65  | .562 | 14.27 | .816  | 20.73  |
| .278 | 7.06 | .388 | 9.85  | .567 | 14.40 | .827  | 21.01  |
| .281 | 7.14 | .406 | 10.31 | .610 | 15.49 | .878  | 22.30  |
|      |      |      |       |      |       | .941  | 23.80  |
|      |      |      |       |      |       | 1.003 | 25.48  |
|      |      |      |       |      |       | 1.066 | 27.08  |
|      |      |      |       |      |       | 3.0   | 76.20  |
|      |      |      |       |      |       | 4.0   | 101.60 |
|      |      |      |       |      |       | 4.5   | 114.30 |
|      |      |      |       |      |       | 6.0   | 152.40 |
|      |      |      |       |      |       | 7.0   | 177.80 |
|      |      |      |       |      |       | 10.0  | 254.00 |



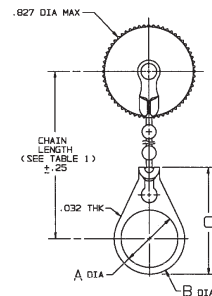
-1 SHOWN  
NO CHAIN, STAINLESS STEEL ROPE OR MOUNTING LUG



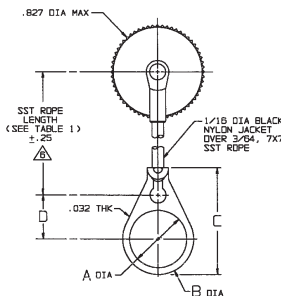
-2-△ THRU -11-△ SHOWN  
STANDARD CHAIN & BASIC MOUNTING LUG



-12-△ THRU  
-17-△ SHOWN  
STAINLESS STEEL ROPE AND BASIC MOUNTING LUG



-2-△ -02 THRU  
-11-△ -00B SHOWN  
STANDARD CHAIN AND BULKHEAD JACK MOUNTING LUG



-12-△ -02 THRU  
-17-△ -00B SHOWN  
STAINLESS STEEL ROPE AND BULKHEAD JACK MOUNTING LUG

NOTE LENGTH FOR SST ROPE WITH MTG LUG OPTION IS NOT MEASURED TO CENTER OF BULKHEAD MTG LUG

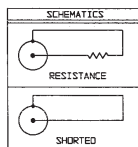
5. EXAMPLE OF COMPLETE MODEL NO:  
TNN1-2-△-02  
BASIC MODEL NO TNN1 (50 OHM)  
UTNN1 (75 OHM)  
CHAIN/ROPE MATL AND LENGTH (SEE TABLE 1)  
BULKHEAD JACK MOUNTING LUG (OPTIONAL) WITH BRASS OR NYLON CHAIN AND STAINLESS STEEL ROPE (SEE TABLE 2)

4. TERMINATED MALE COAXIAL 50 & 75 OHM N TYPE PLUG WITH CHAIN & MOUNTING LUG OPTIONS

RESISTANCE VALUE IN OHMS (1/2W, 1%) SHOWN SHORTED TO CASE AND RESISTOR

2. FINISH: TFS-1A (NICKEL)

1. ALL DIM ARE IN INCHES



| QTY                  | DESCRIPTION | PART NUMBER | ITEM          |
|----------------------|-------------|-------------|---------------|
| 10, UNLESS SPECIFIED |             |             |               |
| .005 ± .005          |             |             |               |
| 90°                  |             |             |               |
| ANGLISH              |             |             |               |
| DWN                  | DKC         | 9-30-88     | MATERIAL      |
| CHK                  | GM          | 10-6-98     | CODE IDENT    |
| ENGR                 |             |             | 14949         |
| APPR                 |             |             | 105-0376      |
|                      |             |             | H             |
| NEXT ASSY            |             |             | REV           |
|                      |             |             | DATE 11-27-72 |
|                      |             |             | SHEET 1C      |