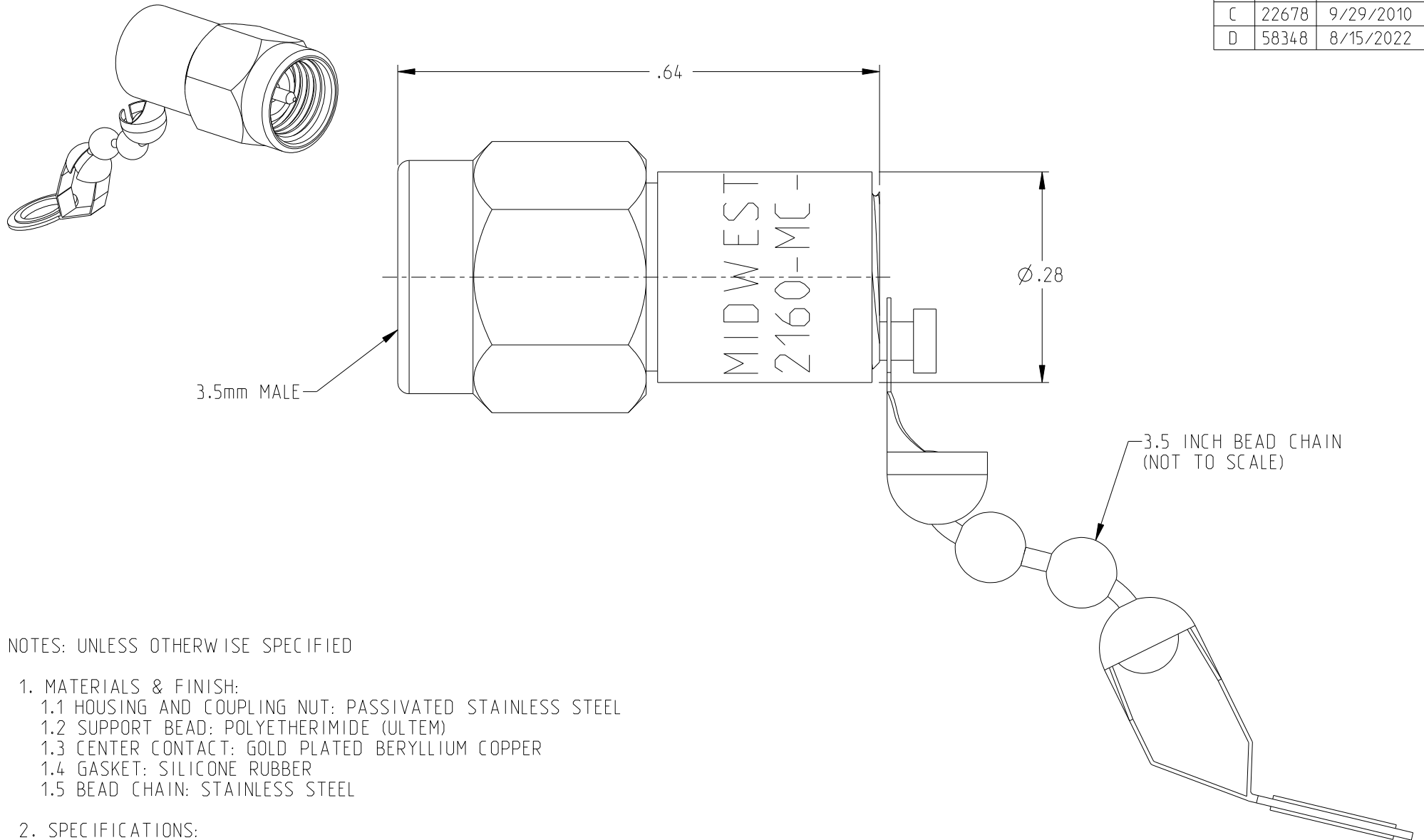


REV	ECO	DATE
B	11948	8/6/1992
C	22678	9/29/2010
D	58348	8/15/2022



NOTES: UNLESS OTHERWISE SPECIFIED

1. MATERIALS & FINISH:

- 1.1 HOUSING AND COUPLING NUT: PASSIVATED STAINLESS STEEL
- 1.2 SUPPORT BEAD: POLYETHERIMIDE (ULTEM)
- 1.3 CENTER CONTACT: GOLD PLATED BERYLLIUM COPPER
- 1.4 GASKET: SILICONE RUBBER
- 1.5 BEAD CHAIN: STAINLESS STEEL

2. SPECIFICATIONS:

- 2.1 FREQUENCY RANGE: DC TO 26.5 GHz
- 2.2 VSWR (MAX):
 - DC TO 18.0 GHz: 1.12:1
 - 18 TO 26.5 GHz: 1.18:1
- 2.3 INPUT POWER (MAX): 2 WATTS AT +25°C, DERATED LINEARLY TO 1 WATT AT +125°C
- 2.4 IMPEDANCE: 50 OHMS NOMINAL
- 2.5 TEMPERATURE RANGE: -65°C TO +125°C

 <small>NOTICE: The information in this drawing is PROPRIETARY and must not be used without the permission of Cinch Connectivity Solutions. It may contain data whose export is restricted. Verify status prior to exporting.</small> <small>INTERPRET DRAWING IN ACCORDANCE WITH ASME Y14.5-2018</small>	Model No: TRM-2160-MC-35M-02	MIDWEST MICROWAVE	
	RoHS2 <input checked="" type="checkbox"/> 2015/863/EU	Cage Code 34078	Title: TERMINATION 3.5MM MALE
<small>UNLESS OTHERWISE SPECIFIED UNITS: INCH</small> .XX ±.02 .XXX ±.005 ANGLES ±1°	3RD ANGLE PROJECTION 	Drawing No. TRM-2160-MC-35M-02-01	REV. D
ENGINEER: J. KEREKES	Date: 8/18/2022	Size A	DO NOT SCALE DRAWING Workmanship Std Sheet 1 OF 1