

RED INDICATES ORIGINAL

DWG SITZ	Q	REVISIONS			305-0811	SH	
		REV	ECD	DESCRIPTION	DWN	APPROVED	DATE
B 11487					GENERAL UPDATE; FOR CHANGES SEE ECD	J S <i>Wm</i> , <i>Fg</i>	11/7/82

TABLE 1				TABLE 2		
DASH NO	CONNECTOR TYPE	MATERIAL	ASSEMBLY PER	FIG	MTG HOLE FIG	MILITARY PART NO (PTN)
-1	PL75	310-0002-32	TA1-180	1A	---	M49142-03-0011
-2	CJ70	3-0043-32		2A	---	M49142-03-0111
-3	BJ79	3-0018-32		3A	10	M49142-03-0211
-4	BJ74	3-0055-32		4A	11	M49142-05-0011
-5	PL75	315-0011-32		1B	---	M49142-05-0111
-6	CJ70	3-0066-32		2B	---	M49142-05-0211
-7	BJ79	3-0074-32		3B	10	M49142-06-0011
-8	BJ74	3-0073-32		4B	11	M49142-06-0111
-9	PL74	310-0025-32		5A	---	M49142-08-0010
-10	CJ70TL	3-0217-32		6A	---	M49142-08-0011
-11	BJ79TL	3-0112-32		7A	10	M49142-09-0011
-12	BJ74TL	3-0105-32		8A	11	M49142-11-0011
-13	PL75FL	310-0006-32		5B	---	
-14	CJ70FL	3-0101-32		6B	---	
-15	BJ75FL	3-0252-32		7B	10	
-16	BJ74FL	3-0068-32		8B	11	
-17	PL73	310-0038-32		9	---	

TABLE 3				
PLUG POLARIZATION CHART (-1 ONLY)				
KEYING LETTER	F DEGREES	G DEGREES	H DEGREES	COLOR BAND
T	100°	150°	110°	RED
U	120°	130°	110°	ORANGE
V	115°	130°	115°	YELLOW
W	125°	110°	125°	GREEN
X	130°	100°	130°	BLUE
Y	110°	140°	110°	VIOLET
Z	100°	160°	100°	GRAY
S	135°	135°	90°	WHITE
NONE	120°	120°	120°	NONE

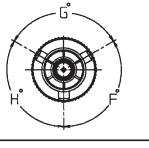
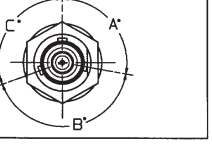


TABLE 4				
JACK POLARIZATION CHART (-2, -3 AND -4 ONLY)				
KEYING LETTER	A DEGREES	B DEGREES	C DEGREES	COLOR BAND
T	100°	150°	110°	RED
U	120°	130°	110°	ORANGE
V	115°	130°	115°	YELLOW
W	125°	110°	125°	GREEN
X	130°	100°	130°	BLUE
Y	110°	140°	110°	VIOLET
Z	100°	160°	100°	GRAY
S	135°	135°	90°	WHITE
NONE	120°	120°	120°	NONE



- ⚠ WHEN CONNECTOR IS SUPPLIED TO MILITARY PART NO. (SEE TABLE 2):
 - a) ALL PARTS NORMALLY PLATED TFS-1A OR TFS-1U (NICKEL) ARE TO BE PLATED TFS-1M (SILVER)
 - b) MARK PART WITH MILITARY PIN (SEE TABLE 2) AND "14949"
 - c) QUALITY CONFORMANCE INSPECTION SHALL BE PER MIL-C-49142 SECTION 4.5
- ⚠ POLARIZATION LETTER: FOR PLUG OPTIONS SEE TABLE 3 (-1 ONLY). FOR JACKS OPTIONS SEE TABLE 4 (-2, -3 AND -4 ONLY)
- ⚠ IF BEND RELIEF SPRING REDD ADD SUFFIX "BR" AFTER DASH NO

5. EXAMPLE OF COMPLETE PART NO:
- 305-0811 T -1
- BASIC PART NO
- POLARIZATION LETTER
- NONE REDD FOR STD POLARIZATION
- DASH NO
- ⚠ REPLACE CLAMP NUT B-1580-32 WITH CLAMP NUT B-1580-33
 - 3. CONCENTRIC TWINAX/TRIAX, 2-LUG, 3-LUG, 4-LUG AND THREADED CABLE PLUGS/RECEPTACLES, INSULATED & MININSULATED BULKHEAD MOUNT RECEPTACLES & PUSH-ON CABLE PLUGS FOR M17/179-00001 CABLE
 - 2. FINISH TFS-1A (NICKEL)
 - 1. ALL DIM ARE IN INCHES

FIG 1

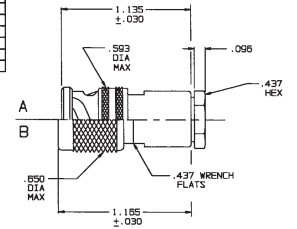


FIG 2

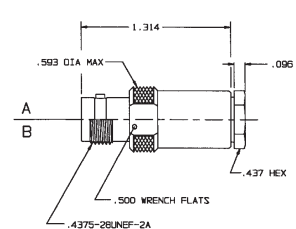


FIG 3

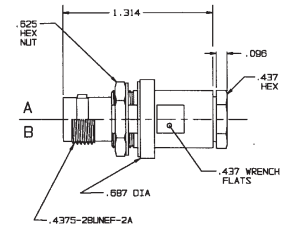


FIG 4

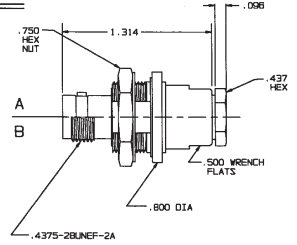


FIG 5

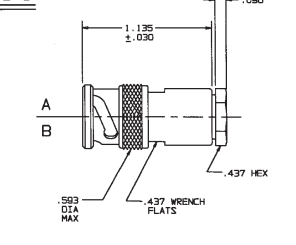


FIG 6

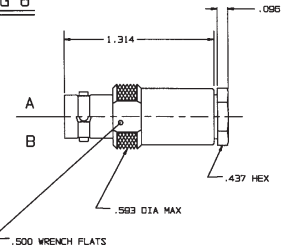


FIG 7

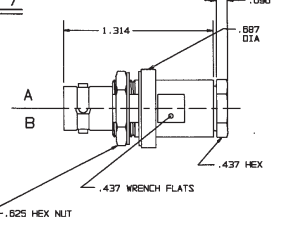


FIG 8

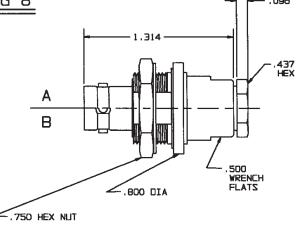


FIG 9

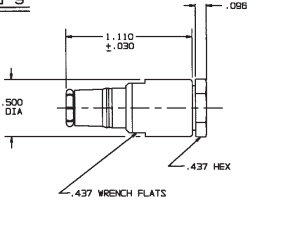


FIG 10

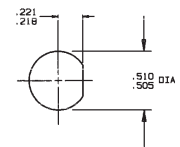
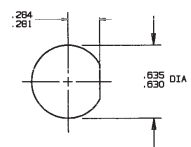


FIG 11



RECOMMENDED PANEL CUTOUT
MAX PNL THK .109

RECOMMENDED PANEL CUTOUT
MAX PNL THK .140

INCH	MM
.005	0.13
.030	0.76
.096	2.44
.108	2.77
.140	3.56
.218	5.54
.221	5.62
.281	7.14
.284	7.21
.437	11.10
.500	12.70
.505	12.83
.510	12.95
.593	15.10
.625	15.88
.630	16.00
.635	16.13
.650	16.51
.667	17.45
.750	19.10
.800	20.32
1.110	28.10
1.135	28.83
1.185	29.99
1.314	33.38

QTY	DESCRIPTION	PART NUMBER	ITEM
TOL UNLESS SPECIFIED X .005 X .0005 X .00025 X .00015 X .0001	TROMPETER RF CONNECTIVITY		
DWN J S 11/15/82		"70" SERIES M17/179-00001	
ENR <i>Wm</i>	MATERIAL	CODE IDENT	DRAWING NO.
ENGR		14949	305-0811
NEXT ASSY	SCALE	DATE	REV
APPR <i>Wm</i>		1-8-82	B