

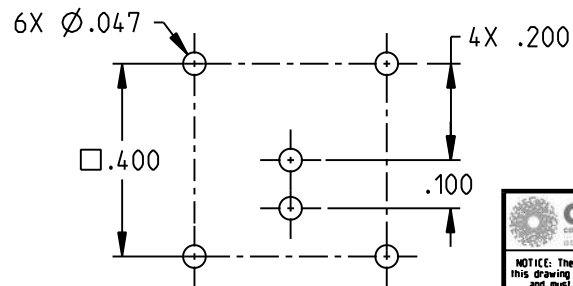
NOTES: UNLESS OTHERWISE SPECIFIED:

1. MATERIAL & FINISH:

- 1.1 BODY: TIN PLATED BRASS
- 1.2 INSULATOR & DIELECTRIC: PTFE (TEFLON)
- 1.3 INTERMEDIATE CONTACT: GOLD PLATED BRASS
- 1.4 CENTER CONTACT: GOLD PLATED BERYLLIUM COPPER

2. ELECTRICAL:

- 2.1 FREQUENCY (MAX): 500 MHZ
- 2.2 IMPEDANCE: NON-CONSTANT



RECOMMENDED MTG HOLE PATTERN

		<h1>TROMPETER</h1>	
	RoHS2 <input checked="" type="checkbox"/> 2015/863/EU	Title: TRS CIRCUIT BOARD JACK	
<small>NOTICE: The information in this drawing is PROPRIETARY and must not be used without the permission of Cinch Connectivity Solutions. It may contain data whose export is restricted. Verify status prior to exporting. INTERPRET DRAWING IN ACCORDANCE WITH ASME Y14.5-2018</small>		Model No. CBJ157	Date: 3/23/2023
UNLESS OTHERWISE SPECIFIED UNITS: INCH .XX $\pm .02$.XXX $\pm .010$ ANGLES $\pm 2^\circ$	Size A	DO NOT SCALE DRAWING	Sheet 1 OF 1