

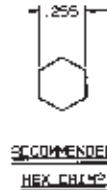
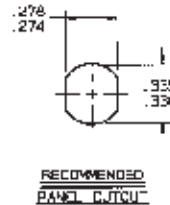
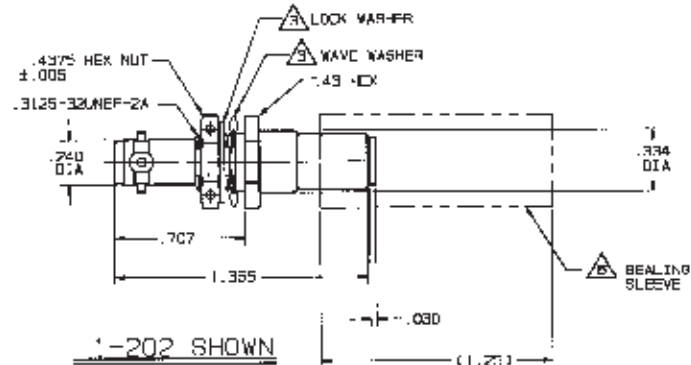
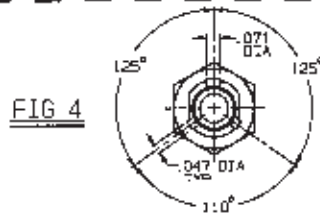
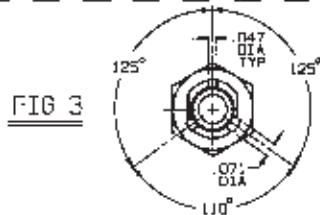
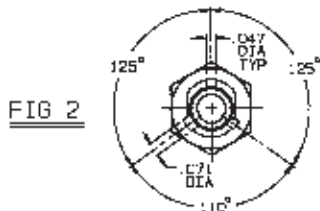
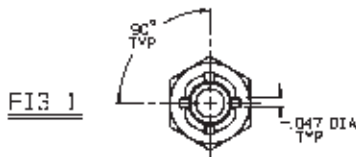
# RED IS ORIGINAL

DRG #	349	DATA CONTAINED IN THIS DOCUMENT IS
NS	C	RESTRICTED TO TROMPETER ELECTRONICS ONLY AND SHALL NOT BE REPRODUCED, COPIED OR USED FOR REPRODUCTION OR MANUFACTURE WITHOUT EXPRESS WRITTEN PERMISSION.

REVISIONS		8-2584		SH 1
REV	ED	DESCRIPTION	OWN	APPROVAL
F	100F1	PICUPTALLY CHANGED I CO FI WAVE SEALING SLEEVE TO A B15A LIGHT (1.25) LONG SEALING SLEEVE: GENERAL IMPROVE	DKC	<i>dkc</i> <i>GFS</i>

TABLE 1			TABLE 2		
LASH NO	MODEL NO	FIG NO	CABLE GROUP NO	CABLE ACCOMMODATED	ASSEMBLY PER
-1	BJ45BACFL	1	-201	M17-178-30002	TAI-162
-2	BJ45BACFP	2	-202	TWC-78-1, TROMPETER	
-3	BJ45BACR	3	-203	TWC-124-LA, TROMPETER	
-4	BJ45BACW	4	-204	10002, RAYCHEM	
			-205	TWAC-78-LF2, TROMPETER	
			-206	78250C130, RAYCHEM	
			-208	202-3927, MICRODOT	
			-206	202-3642, MICRODOT	
			-212	2524FD114, RAYCHEM	
			-217	00875TM24H, BILHMAN	
			-218	5PC221830, RAYCHEM	
			-219	2526D1114, RAYCHEM	
			-220	00875D01, BILHMAN	
			-221	10614, RAYCHEM	
			-222	10613, RAYCHEM	
			-223	HM62-1149, HUGHES	

INCH	MM
.005	0.13
.010	0.25
.015	0.38
.020	0.51
.030	0.76
.040	1.02
.050	1.27
.075	1.90
.100	2.54
.125	3.18
.150	3.81
.175	4.45
.200	5.08
.250	6.35
.300	7.62
.350	8.89
.400	10.16
.450	11.43
.500	12.70
.750	19.05
1.000	25.40
1.250	31.75
1.500	38.10



**5** CRIMP BUSHING AND SEALING SLEEVE SUPPLIED LOOSE WITH CABLE BODY ASSY

5. EXAMPLE OF COMPLETE MODEL NO:  
 B-459AC M -221  
 BASIC MOD. NO. (SEE TABLE 1)      CABLE GROUP NO. (SEE TABLE 2)  
 JUG POLARIZATION  
 F = 4-LLG, FIG 1  
 P = 3-LLG, FIG 2  
 R = 3-LLG, FIG 3  
 W = 3-LLG, FIG 4

4. EXAMPLE OF COMPLETE PART NO:  
 8-2584 -1 -221  
 BASIC PART NO.      CABLE GROUP NO. (SEE TABLE 2)  
 DASH NO. (LLG POLARIZATION SEE TABLE 1)

**3** MAX PANEL THK: .155 WITH ECT-FR LOCK WASHER OR WAVE WASHER

2. FINISH: TFR-11 (500 HOURS SALT SPRAY/NICKEL)

1. ALL DIM ARE IN INCHES

QTY	DESCRIPTION	PART NUMBER	ITM
10 (UNLESS SPECIFIED)	<b>TROMPETER</b> RF connectivity	BJ45BACFL/RM	
		SCDY ASSY	
OWN	DKC 12-B-92	MATERIAL	DATE 10-16-57
CHK	<i>dkc</i> 12/1/92	QMS IDNOY	14949
ENDR		DRAWING NO.	8-2584
APPR	<i>dkc</i> 12/1/92	REV	F
NEXT ABBY		SCALE 2:	DATE 10-16-57
		SHEET	1 OF 2