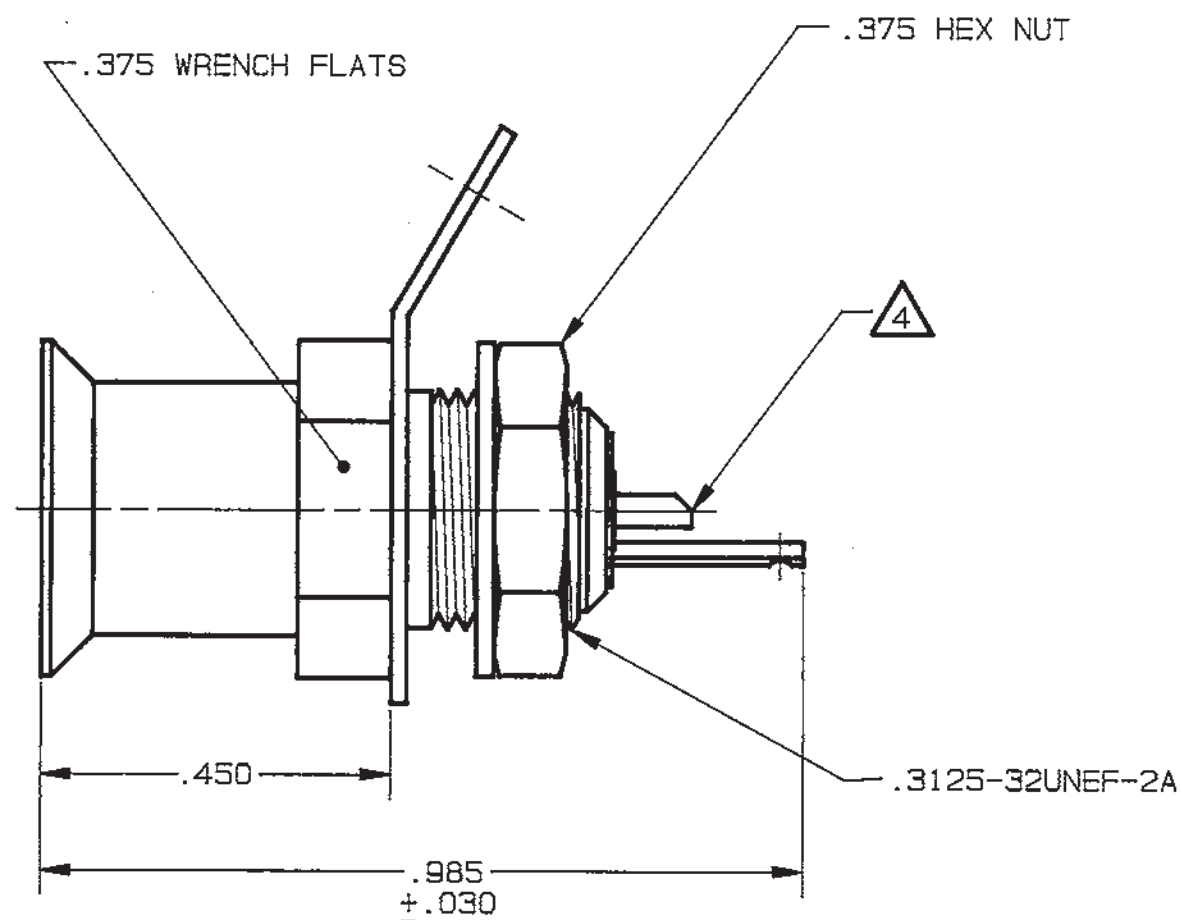
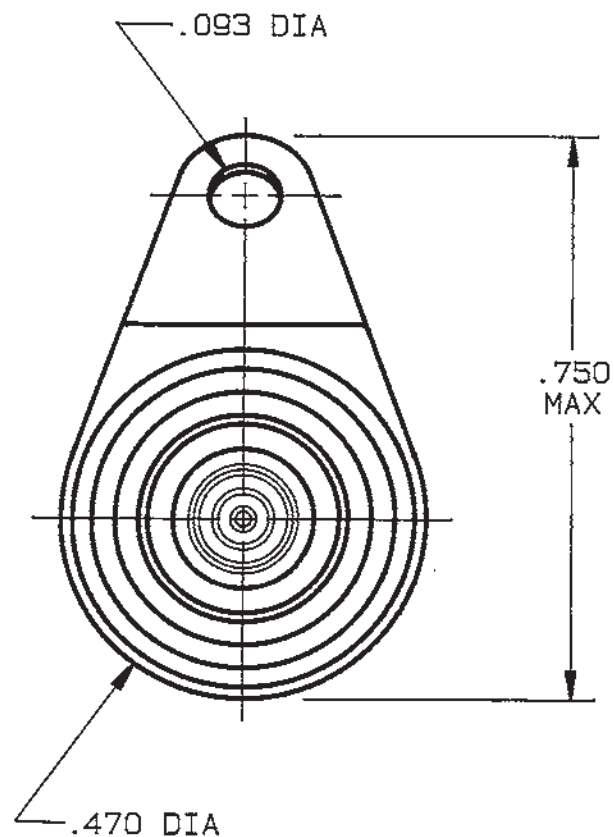


INCH	MM
.005	0.13
.025	0.66
.030	0.76
.088	2.24
.093	2.36
.450	11.43
.470	11.94
.750	19.05
.985	25.02

DISK # H12 DWG SIZE B
 DATA CONTAINED IN THIS DOCUMENT IS PROPRIETARY TO TROMPETER ELECTRONICS INC. AND SHALL NOT BE DISCLOSED, COPIED OR USED FOR PROCUREMENT OR MANUFACTURE WITHOUT EXPRESS WRITTEN PERMISSION.

REVISIONS			3-0067		SH 1
REV	EO	DESCRIPTION	DWN	APPROVED	DATE
D	9236	.750 MAX WAS .717; DWG NO WAS 3000-0067; REDWN ITEM 5 DESCRIPTION WAS CONTACT	DKC	B.M.; K.Y.	4-1-91



5. SUBMINIATURE CONCENTRIC TWINAX/TRIAX PUSH-ON SOLDER POT PANEL JACK

4 SOLDER POT ACCEPTS .026 MAX DIA CONDUCTOR

3. MAX PANEL THICKNESS .088

2. FINISH: TFS-1A (NICKEL)

1. ALL DIM ARE IN INCHES

QTY	DESCRIPTION			PART NUMBER	ITEM	
TOL UNLESS SPECIFIED				BJ151		
.XX ±						
.XXX ± .005						
.XXXX ±						
ANGLES ±						
DWN	DKC	3-14-91	MATERIAL	CODE IDENT	DRAWING NO.	
CHK	B.M.	3-29-91	—	14949	3-0067	
ENGR	K.Y.	3-29-91			REV	
	APPR	3-29-91	SCALE 4/1	DATE 7-7-81	SHEET 1 OF 2	

NEXT ASSY