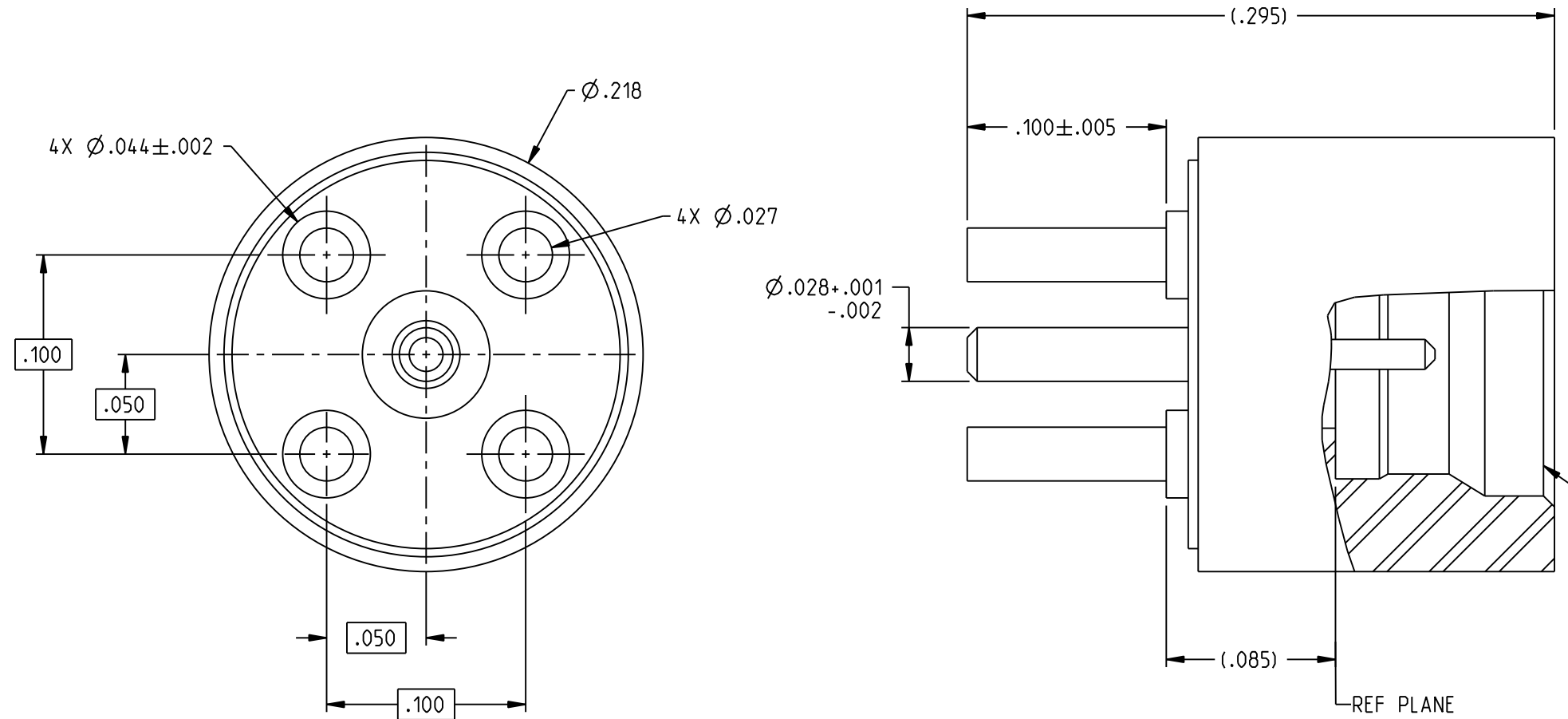
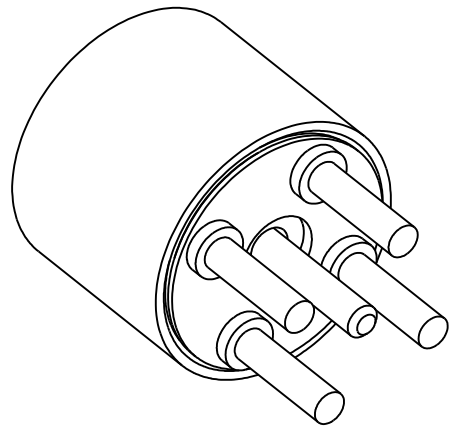


MODEL NUMBER
127-1701-201



SMP LIMITED
DETENT INTERFACE
PER MIL-STD-348,
FIGURE 326-3

NOTES: UNLESS OTHERWISE SPECIFIED.

1. MATERIAL & FINISH:

- 1.1 BODY: PASSIVATED STAINLESS STEEL
- 1.2 BASE: GOLD PLATED BRASS
- 1.3 CONTACT: GOLD PLATED BERYLLIUM COPPER
- 1.4 INSULATOR: PTFE (TEFLON)

2. ELECTRICAL SPECIFICATIONS:

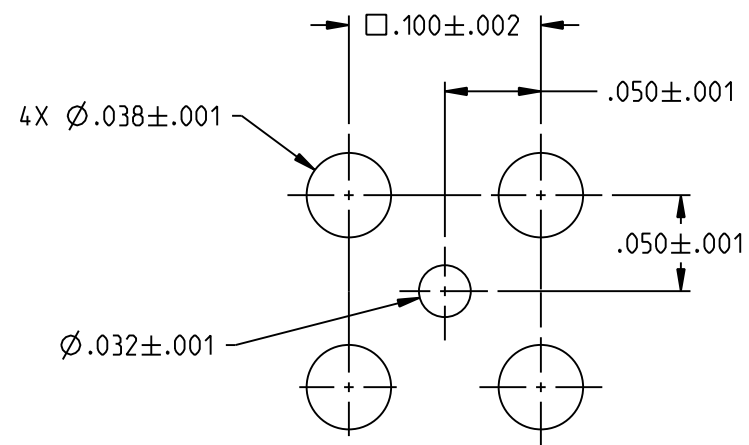
- 2.1 IMPEDANCE: 50 OHMS NOMINAL
- 2.2 FREQUENCY RANGE: 0-12 GHz
- 2.3 WORKING VOLTAGE: 335 VRMS MAX AT SEA LEVEL
- 2.4 DIELECTRIC WITHSTANDING VOLTAGE: 500 VRMS MIN AT SEA LEVEL
- 2.5 INSULATION RESISTANCE: 5000 MEGOHMS MIN
- 2.6 CONTACT RESISTANCE:
CENTER CONTACT - INITIAL 6.0 MILLIOHMS MAX.
OUTER CONDUCTOR - INITIAL 2.0 MILLIOHMS MAX.
- 2.7 CORONA LEVEL: 190 VOLTS MIN AT 70,000 FEET
- 2.8 RF HIGH POTENTIAL WITHSTANDING VOLTAGE: 325 VRMS MIN AT 4 AND 7 MHZ

3. MECHANICAL SPECIFICATIONS:

- 3.1 INTERFACE DESIGN: IN ACCORDANCE WITH MIL-STD-348, FIGURE 326-3
- 3.2 ENGAGEMENT FORCE: 10 LBS MAX
- 3.3 DISENGAGEMENT FORCE: 2 LBS MIN
- 3.4 CONTACT RETENTION: 1.5 LBS MIN AXIAL FORCE
- 3.5 DURABILITY: 500 CYCLES MIN

4. ENVIRONMENTAL SPECIFICATIONS:

- 4.1 MEETS OR EXCEEDS THE APPLICABLE PARAGRAPH OF DSCC DWG NO. 94007
- 4.2 OPERATING TEMPERATURE RANGE: -65°C TO +165°C
- 4.3 THERMAL SHOCK: MIL-STD-202, METHOD 107, CONDITION B, EXCEPT 165°C HIGH TEMP
- 4.4 MECHANICAL SHOCK: MIL-STD-202, METHOD 213, CONDITION I
- 4.5 CORROSION: MIL-STD-202, METHOD 101, CONDITION B
- 4.6 VIBRATION: MIL STD-202, METHOD 204 CONDITION D
- 4.7 MOISTURE RESISTANCE: MIL-STD-202, METHOD 106, EXCEPT STEP 7B OMITTED



MOUNTING HOLE LAYOUT

| | | | |
|---|---|---|------------------------------|
| | | JOHNSON | |
| | RoHS2 2011/65/EU | Title: SMP, LIMITED DETENT STRAIGHT PC MOUNT | Model No. 127-1701-201/210 |
| <small>This PROPRIETARY Document is property of Cinch Connectivity Solutions. It is confidential in nature, non-transferable, and issued with the clear understanding that it is not to be traced or copied without permission and is returnable upon demand.</small> | UNLESS OTHERWISE SPECIFIED UNITS: INCH .XX ±.02 .XXX ±.003 ANGLES ±2° | Size B DO NOT SCALE DRAWING | Date 12/19/2018 Sheet 1 OF 1 |