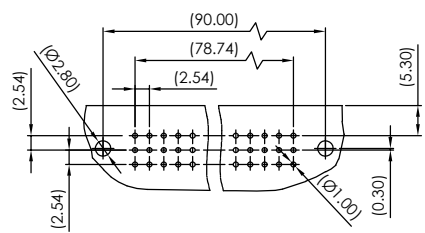
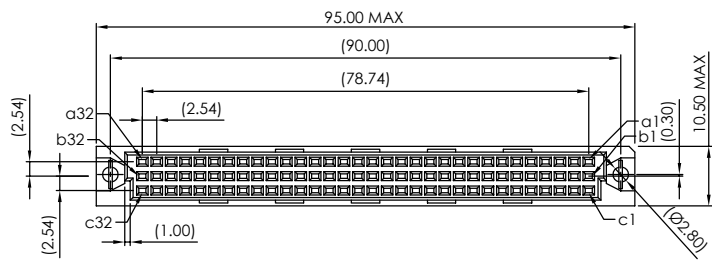
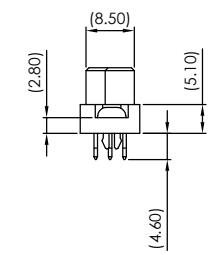
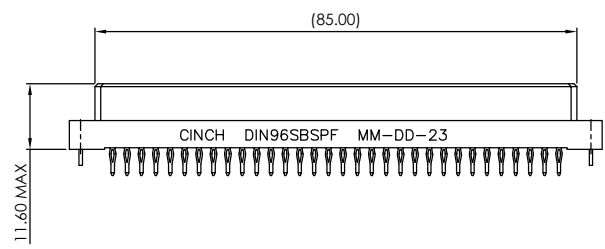


DRAWING REVISIONS (RELEASE DATE ON FILE)			
REV	DOCUMENT	APP	APPROVAL DATE
A	CCS11405	JW	2/28/23

- FEATURES:**
- 96 Circuits
  - Housing: PBT+30% Glass Filled UL 94V-0
  - Contact: Phosphor Bronze, Gold, Tin Tails
  - Board Lock: Brass, Tin
- SPECIFICATIONS:**
- Current rating: 2A
  - Temperature range: -55° C to +125° C
  - Contact resistance: 20mΩ max.
  - Mating Force: .93N max. per pin
  - PRESS-FIT for 1.6mm (.062") and 3.4mm (.134") PCB available



Recommended P.C Board Hole Layout



<b>UNITS</b> METRIC DO NOT SCALE DRAWING UNLESS OTHERWISE SPECIFIED, DIMENSIONS ARE IN MILLIMETERS FINISHES: FILERAZD, 258MAX, TOLERANCES AND DIMS: .010, .015, .020, .025, .030, .040, .050, .060, .070, .080, .090, .100, .125, .150, .175, .200, .250, .300, .375, .450, .500, .625, .750, .875, 1.000, 1.250, 1.500, 1.750, 2.000, 2.500, 3.000, 3.750, 4.500, 5.000, 6.000, 7.000, 8.000, 9.000, 10.000, 12.500, 15.000, 17.500, 20.000, 25.000, 30.000, 37.500, 45.000, 50.000, 60.000, 70.000, 80.000, 90.000, 100.000, 125.000, 150.000, 175.000, 200.000, 250.000, 300.000, 375.000, 450.000, 500.000, 600.000, 700.000, 800.000, 900.000, 1000.000 THIS DRAWING IS THE PROPERTY OF CINCH CONNECTORS INC. IT IS TO BE USED ONLY FOR THE PROJECT AND QUANTITY SPECIFIED ON THE DRAWING. IT IS NOT TO BE REPRODUCED OR TRANSMITTED IN ANY FORM OR BY ANY MEANS, ELECTRONIC OR MECHANICAL, INCLUDING PHOTOCOPYING, RECORDING, OR BY ANY INFORMATION STORAGE AND RETRIEVAL SYSTEM.	<b>DATE</b> 2/23/23	<b>SCALE</b> 1:1	<b>TITLE</b> DIN 41612 SERIES FEMALE, PRESS FIT	1:00 FINLEY RD LOMBARD, IL 60148	
	<b>DESIGN ENGINEER</b> J. WARRACH	<b>DATE</b> 2/23/23	<b>MATERIAL</b> N/A	<b>CONTROL SPEC/PODS</b> N/A	<b>APPROVALS</b> ON FILE
	<b>APPROVALS</b> ON FILE	<b>DESIGNING NUMBER</b> 25053-96F2113-CINCH-PB	<b>DATE</b> 7/17/85	<b>SCALE</b> 1:1	<b>SHEET</b> 1 OF 1
	<b>CONFIDENTIAL</b> THIS DRAWING IS THE PROPERTY OF CINCH CONNECTORS INC. IT IS TO BE USED ONLY FOR THE PROJECT AND QUANTITY SPECIFIED ON THE DRAWING. IT IS NOT TO BE REPRODUCED OR TRANSMITTED IN ANY FORM OR BY ANY MEANS, ELECTRONIC OR MECHANICAL, INCLUDING PHOTOCOPYING, RECORDING, OR BY ANY INFORMATION STORAGE AND RETRIEVAL SYSTEM.	<b>DATE</b> 2/23/23	<b>SCALE</b> 1:1	<b>TITLE</b> DIN 41612 SERIES FEMALE, PRESS FIT	1:00 FINLEY RD LOMBARD, IL 60148