

NOTES:

1. SPECIFICATIONS:

ELECTRICAL:  
 WITHSTANDING VOLTAGE: MINIMUM 1250 V RMS @ SEA LEVEL  
 INSULATION RESISTANCE: INITIAL 5000 MEGOHMS MAXIMUM, 1000 MEGOHMS MIN. AFTER ENVIRONMENTAL TESTING.  
 CONTACT RATING: 5 AMPS  
 CONTACT RESISTANCE: 2.7 MILLIOHMS MAX.

MATERIALS:  
 INSULATOR: WHITE UL94V-0 RATED GLASS FILLED POLYESTER  
 CONTACT: COPPER ALLOY  
 CONTACT AREA PLATING: GOLD OVER NICKEL,  
 CONNECTOR SHELL: STEEL, PLATING ZINC WITH CLEAR CHROMATE.

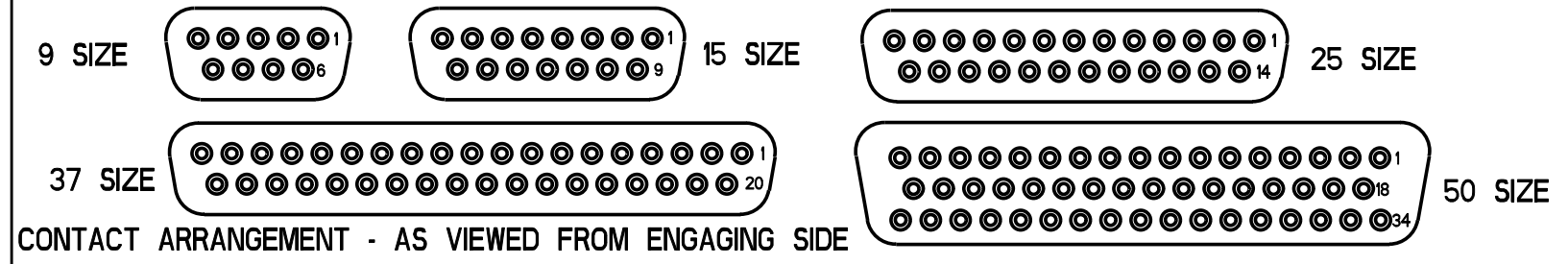
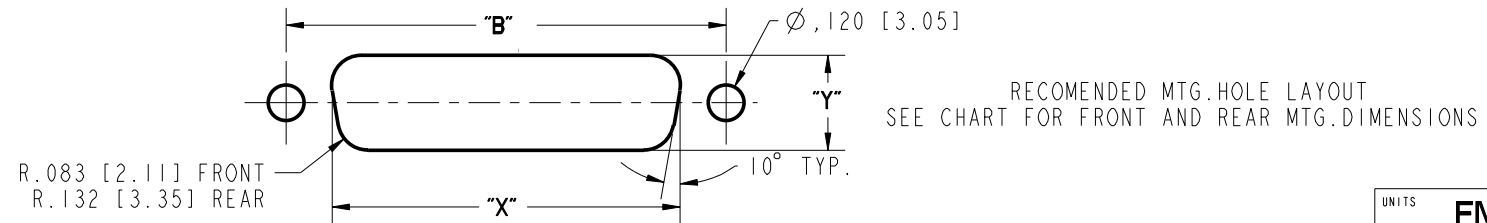
ENVIRONMENTAL:  
 OPERATING TEMPERATURE: -65°C TO +125°C

TERMINATION:  
 2. TERMINALS ARE INTENDED (BECAUSE OF THE FLOAT) TO BE HAND HAND WIRE WRAPPED ONLY. WIRE WRAP # 28 & 30 AWG WIRE.

3. DIMENSIONS IN [ ] ARE IN MILLIMETERS.

DRAWING REVISIONS			
REV	DOCUMENT	APP	DATE
A	DO 05-1094	AKB	1/7/06
B	ECN 06E465		

NUMBER OF POSITIONS	SELECTIVE GOLD FLASH PLATING (.120" [3.05] MTG. HOLES)		WIRE WRAP TAIL LENGTH	DIMENSION						FRONT MOUNTING HOLE DIMENSIONS		REAR MOUNTING HOLE DIMENSIONS		
	PART NO.	FACTORY NO.		"A"	"B"	"C"	"D"	"E"	"F"	"G"	"X"	"Y"	"X"	"Y"
9	DEH-9S-F179	702 11 09 030	.375 [9.52]	1.213 [30.81]	.984 [24.99]	.640 [16.26]	.308 [7.82]	.494 [12.55]	.759 [19.28]	.874 [22.20]	.513 [13.03]	.806 [20.47]	.449 [11.40]	
	DEH-9S-F179C	702 11 09 050	.585 [14.86]											
15	DAH-15S-F179	702 11 15 030	.375 [9.52]	1.541 [39.14]	1.312 [33.32]	.968 [24.59]	.308 [7.82]	.494 [12.55]	1.083 [27.51]	1.202 [30.53]	.513 [13.03]	1.134 [28.80]	.449 [11.40]	
	DAH-15S-F179C	702 11 15 050	.585 [14.86]											
25	DBH-25S-F179	702 11 25 030	.375 [9.52]	2.088 [53.04]	1.852 [47.04]	1.508 [38.30]	.308 [7.82]	.494 [12.55]	1.625 [41.28]	1.743 [44.27]	.513 [13.03]	1.674 [42.52]	.449 [11.40]	
	DBH-25S-F179C	702 11 25 050	.585 [14.86]											
37	DCH-37S-F179	702 11 37 030	.375 [9.52]	2.729 [69.32]	2.500 [64.50]	2.156 [54.76]	.308 [7.82]	.494 [12.55]	2.272 [57.71]	2.391 [60.73]	.513 [13.03]	2.326 [59.08]	.449 [11.40]	
	DCH-37S-F179C	702 11 37 050	.585 [14.86]											
50	DDH-50S-F179	702 11 50 030	.375 [9.52]	2.635 [66.93]	2.406 [61.11]	2.062 [52.37]	.308 [7.82]	.494 [12.55]	2.178 [55.32]	.534 [13.56]	2.297 [58.34]	.623 [15.82]	2.218 [56.34]	.555 [14.10]
	DDH-50S-F179C	702 11 50 050	.585 [14.86]											



**ROHS COMPLIANT**

UNITS	ENGLISH	PRO/E	MODELED BY: V.SKUZA
DO NOT SCALE DRAWING	DRAWN BY V.SKUZA	DATE 06/14/05	TITLE D-SUB WIRE WRAP, 375/ .585 LG. CONNECTOR SKT. ASS'Y (.120" MTG HOLES)
	DESIGN ENGINEER A.BALI	06/14/05	MATERIAL CONTROL SPEC NUMBER
	DESIGN ENGINEERING MGR. A.SHAH	07/09/05	MATERIAL SPEC NUMBER FINISH PROJECT NUMBER C14716
THIS DOCUMENT IS THE PROPERTY OF CINCH. NEITHER THIS DOCUMENT NOR ANY OF THE INFORMATION CONTAINED IN IT MAY BE DUPLICATED OR DISCLOSED WITHOUT PRIOR WRITTEN CONSENT OF CINCH.	MFG. ENGINEERING J.OCEGUERA	07/06/05	CAD FILE NUMBER DXHXS F179
	QUALITY ASSURANCE A.VAZQUEZ	07/07/05	CAGE IDENT NO. SIZE 71785 B
			DRAWING NUMBER <b>D*H-XXS-F179</b>
			SCALE 1:1
			SHEET 1 OF 1