

NOTES:

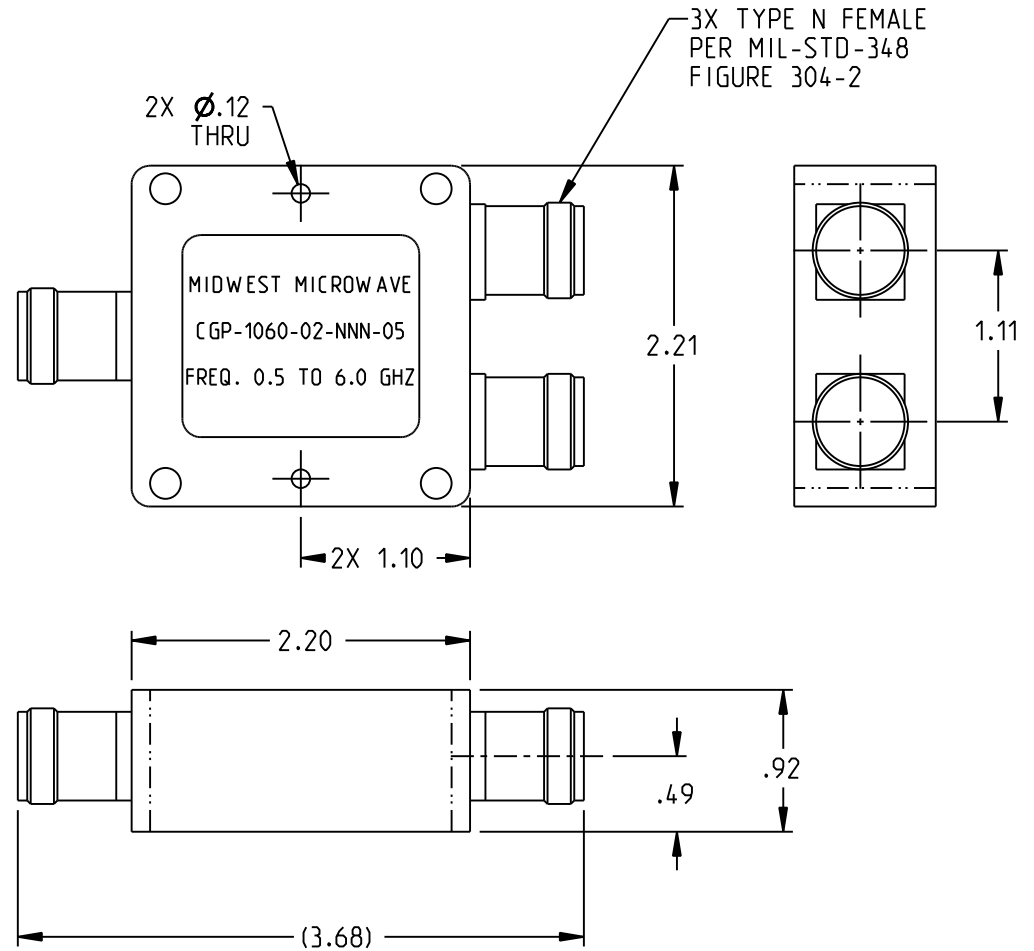
1. SPECIFICATIONS:

- 1.1 FREQUENCY RANGE: 0.5 TO 6.0 GHz
- 1.2 INSERTION LOSS: 0.7 dB MAX
- 1.3 AMPLITUDE UNBALANCE:  $\pm 0.3$  dB
- 1.4 PHASE UNBALANCE:  $\pm 2.0^\circ$
- 1.5 ISOLATION (MIN): 0.5-0.7 GHz 15 dB  
0.7-6.0 GHz 20 dB
- 1.6 VSWR (MAX): 0.5-0.7 GHz 1.55:1  
0.7-6.0 GHz 1.30:1
- 1.7 INPUT POWER: 35W FORWARD  
2W REVERSE
- 1.8 OPERATING TEMPERATURE: -65°C TO 85°C
- 1.9 NOMINAL IMPEDANCE: 50 OHMS

2. MATERIAL & FINISH:

- 2.1 HOUSING: CHEMICAL CONVERSION COATED ALUMINUM
- 2.2 CONNECTOR: TRI-ALLOY PLATED BRASS
- 2.3 CENTER CONTACT: SILVER PLATED BERYLLIUM COPPER

REV	ECO	DATE
—	—	—
001	58250	04/29/2022



<p>NOTICE: The information in this drawing is PROPRIETARY and must not be used without the permission of Cinch Connectivity Solutions. It may contain data whose export is restricted. Verify status prior to exporting.</p> <p>INTERPRET DRAWING IN ACCORDANCE WITH ASME Y14.5-2018</p>	Model No:	CGP-1060-02-NNN-05	MIDWEST MICROWAVE			
	RoHS	Cage Code	34078	Title:	POWER DIVIDER OUTLINE DRAWING	
	UNLESS OTHERWISE SPECIFIED UNITS: INCH	3RD ANGLE PROJECTION	ENGINEER:	R. BRENDAL	Drawing No.	CGP-1060-02-NNN-05-01
	.XX ±.02 .XXX ±.005 ANGLES ±2°	Date:	05/13/2022	Size	A	DO NOT SCALE DRAWING
			Workmanship Std:	NONE	Sheet	1 OF 1
					REV.	001